

[illegible]

PRELIMINARY PLAN
NOT FOR CONSTRUCTION

**THESE PLANS ARE NOT FULLY PERMITTED
AND ARE SUBJECT TO REVISIONS MADE
DURING THE PERMITTING PROCESS.**

**RESPONSIBILITY FOR THE USE OF THESE
PLANS PRIOR TO OBTAINING PERMITS FROM
ALL AGENCIES HAVING JURISDICTION OVER
THE PROJECT WILL FALL SOLELY UPON THE
USER.**

ISSUE DATE: 03/11/2026

DESIGNED BY: CA

DRAWN BY: BN

CHECKED BY: CA

BID-CONTRACT:

CHRISTOPHER T. ANDREONI, P.E.
FLORIDA REG. NO. 84184
(FOR THE FIRM)

CLIENT

**RP
POMPAÑO
LLC**

PROJECT

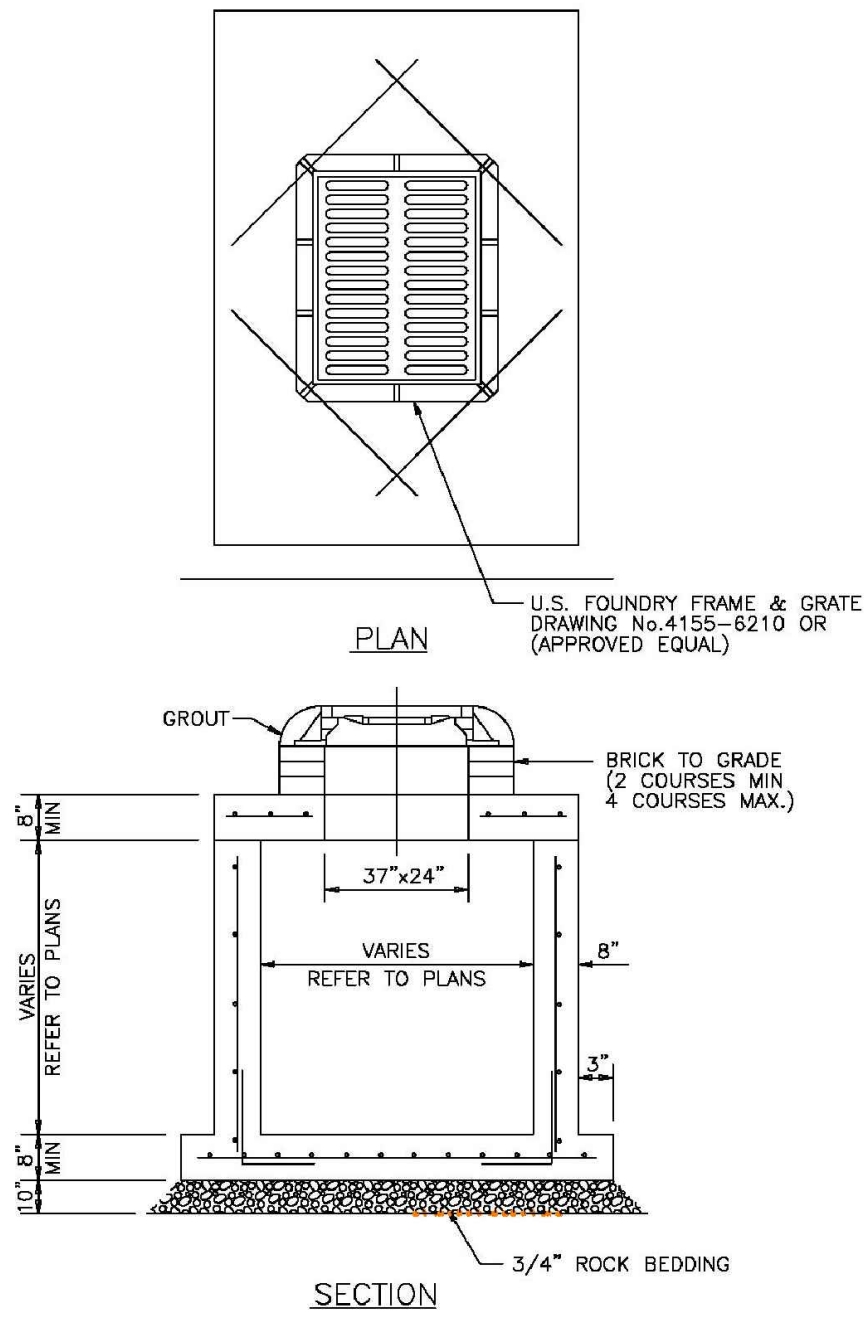
**POMPANO BEACH
CITY HALL &
PARKING DECK**

SHEET TITLE

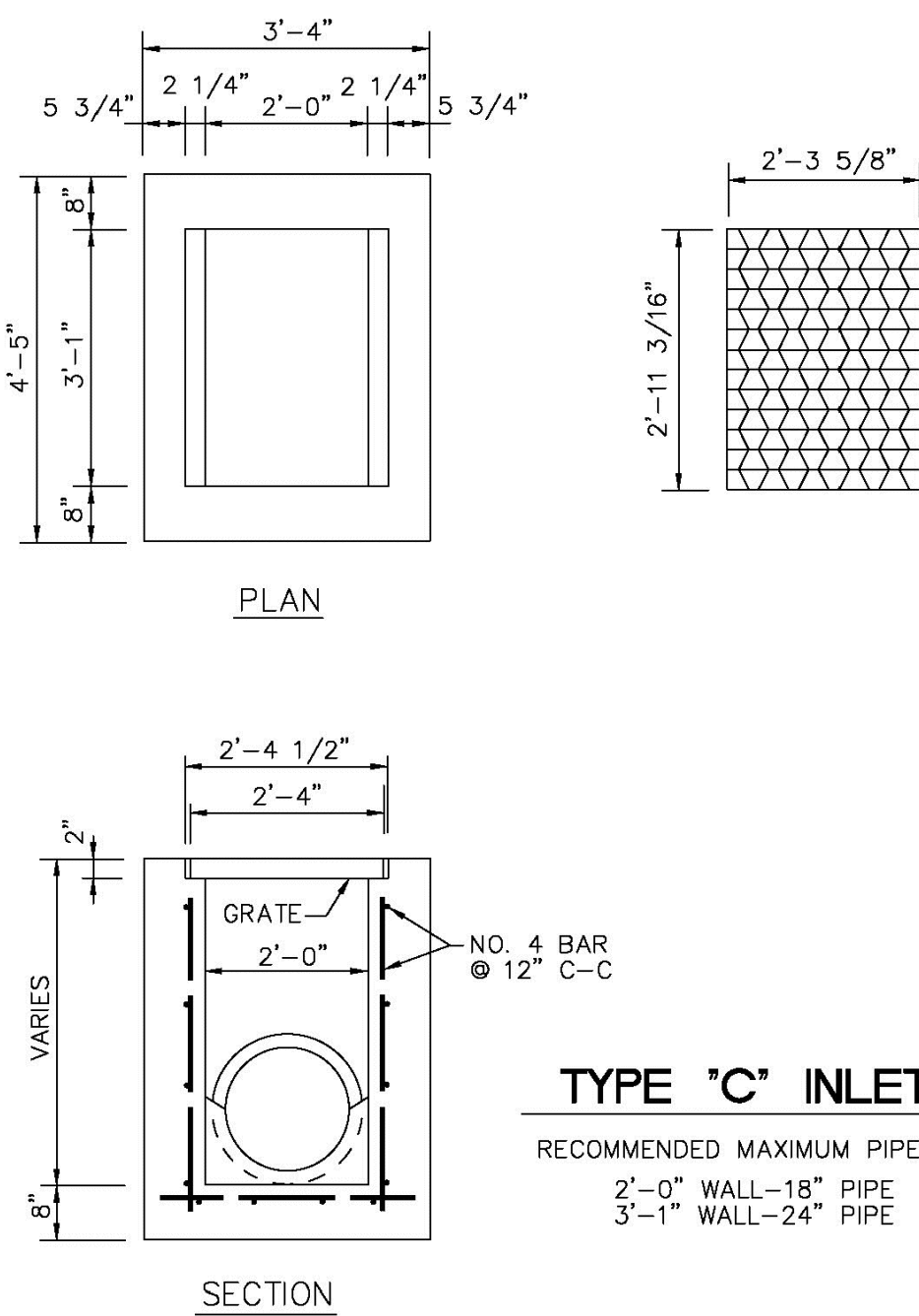
PAVING, GRADING, AND DRAINAGE DETAILS

**SHEET
NUMBER** **CP-503**

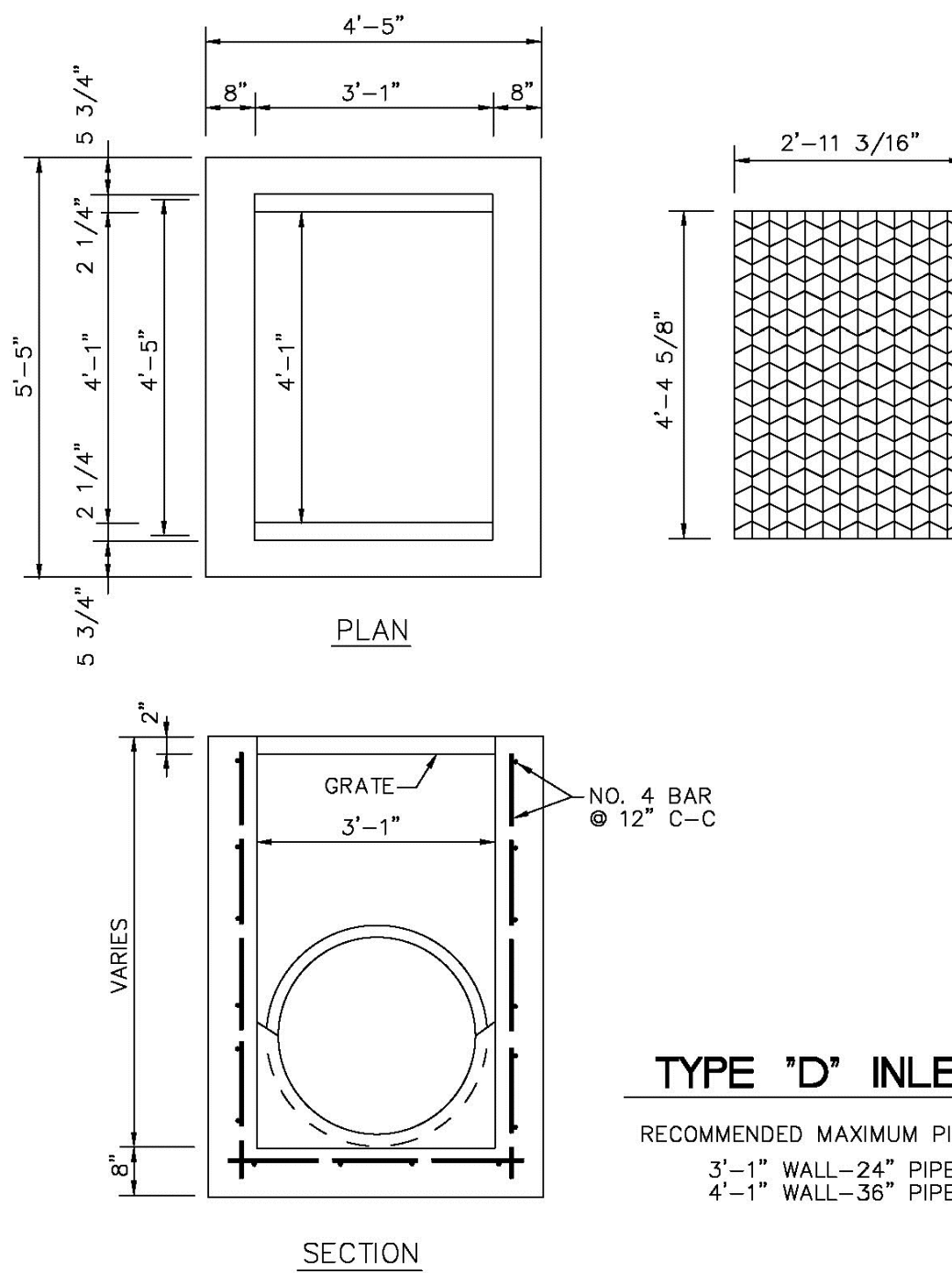
PROJECT NUMBER	15083.00
----------------	----------



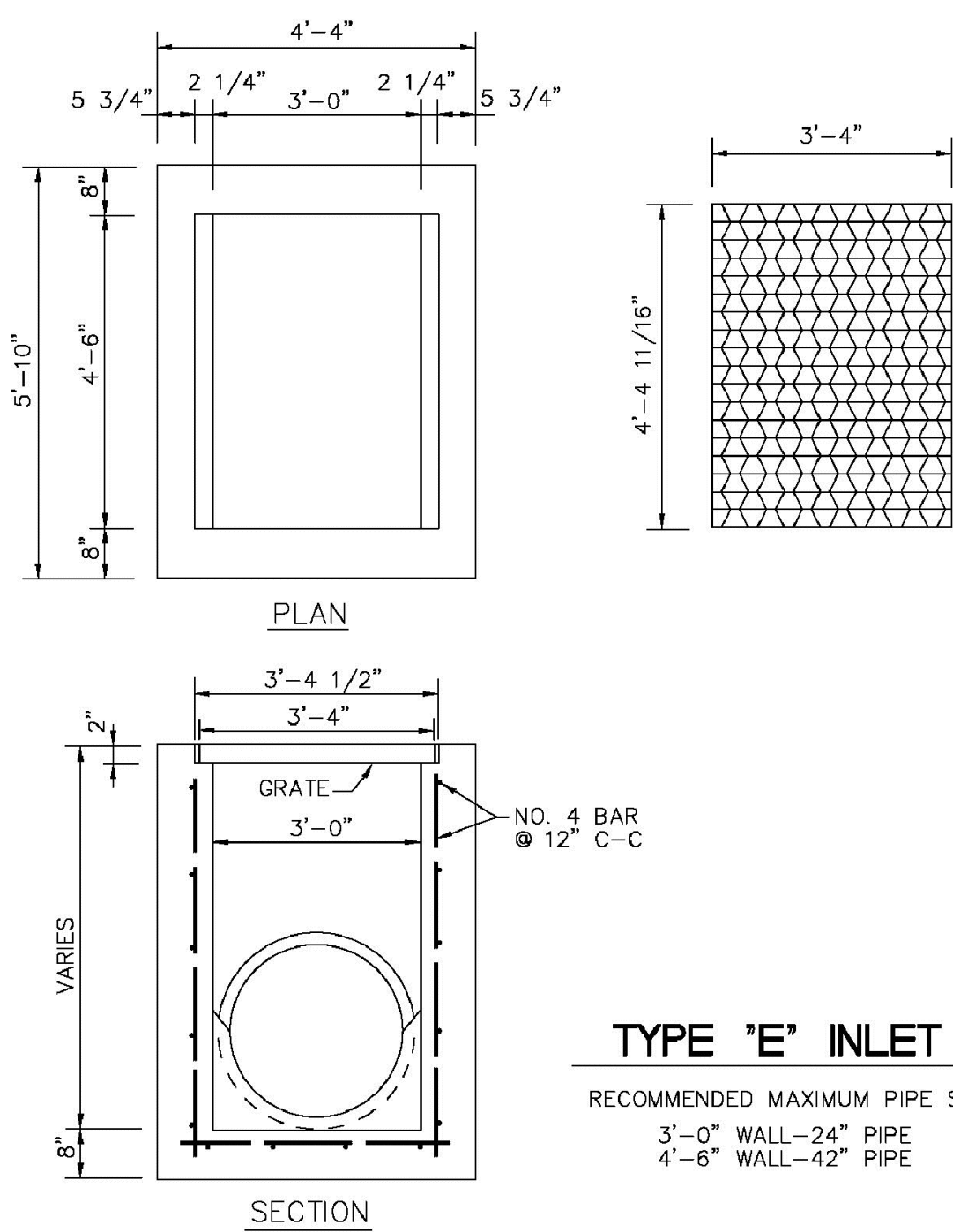
ENGINEERING STANDARDS 2025				
REVISIONS		ENGINEERING DIVISION CITY OF POMPANO BEACH	PRECAST DRAINAGE STRUCTURE	
BY	DATE			DATE: APRIL 2024 DWG. NO. 400-1A
A.S.	04-24			
		SCALE: N.T.S.		



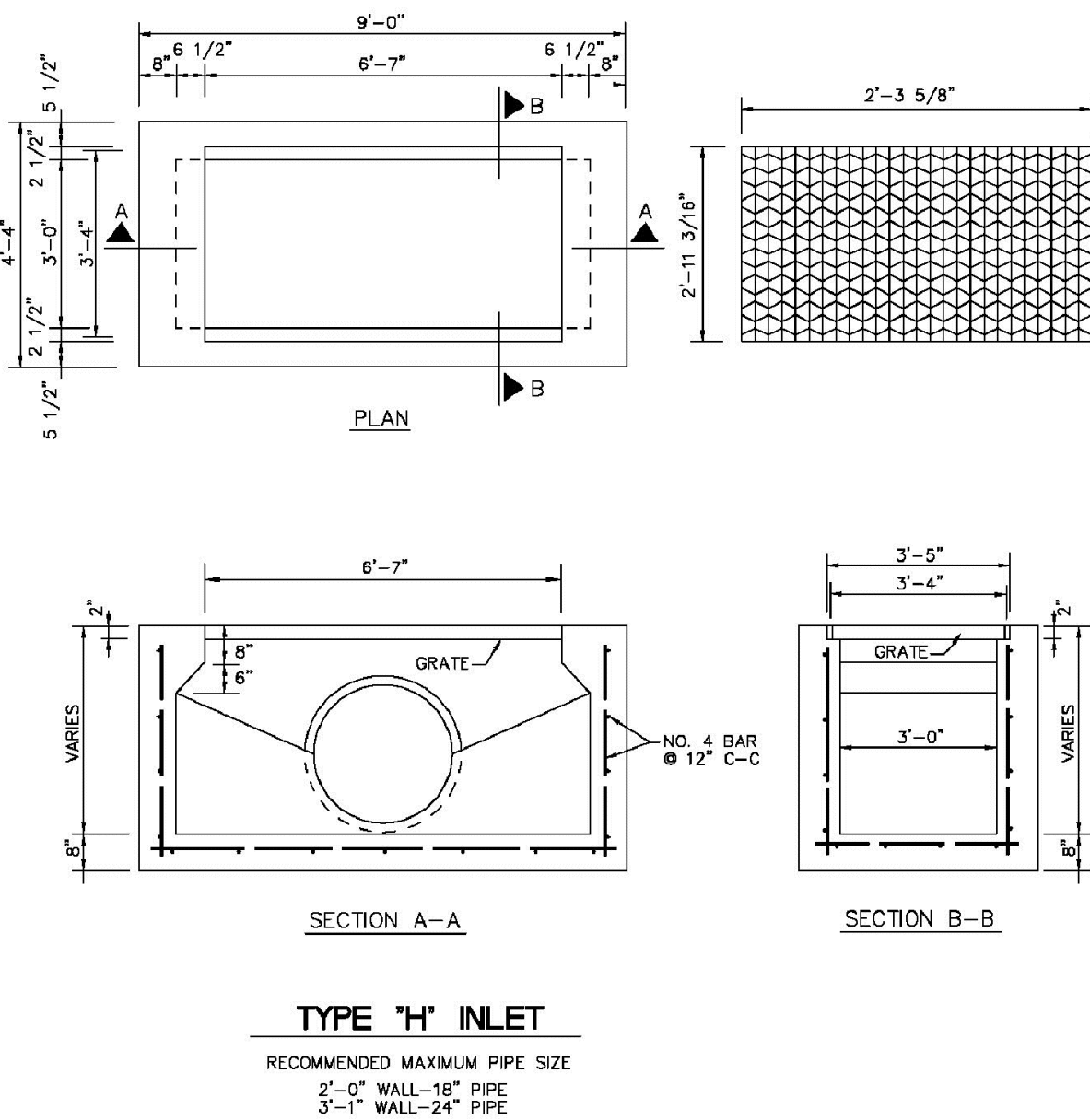
ENGINEERING STANDARDS 2025			
REVISIONS		ENGINEERING DIVISION CITY OF POMPANO BEACH	TYPE 'C' INLET
BY	DATE		
S.S.	09-11		DATE: JUNE 2022 DWG. NO. 400-1B
		SCALE: N.T.S.	



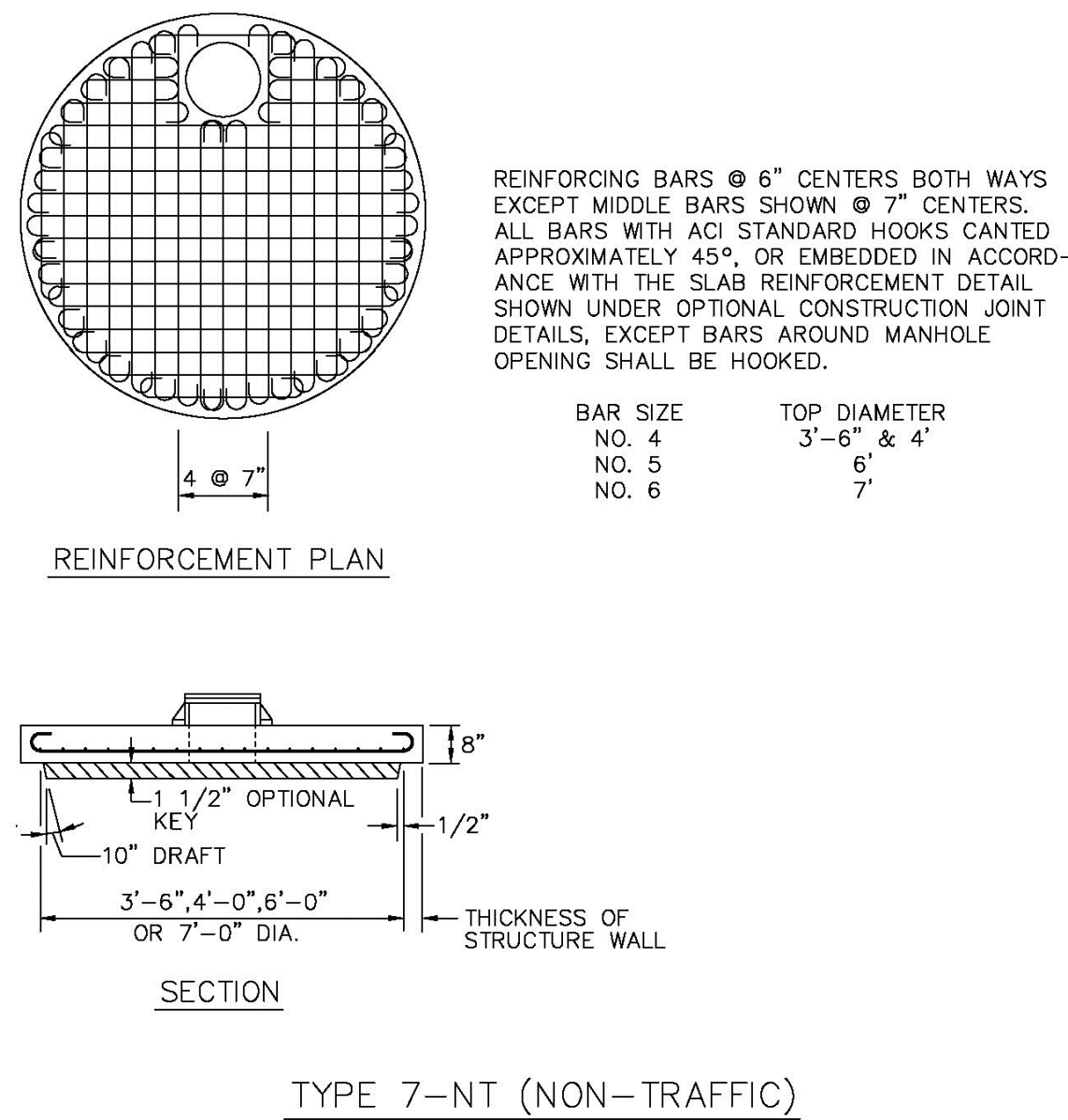
ENGINEERING STANDARDS 2025			
REVISIONS		ENGINEERING DIVISION CITY OF POMPANO BEACH	TYPE 'D' INLET
BY	DATE		
S.S.	09-11		
		SCALE: N.T.S.	DATE: JUNE 2022 DWG. NO. 401-1



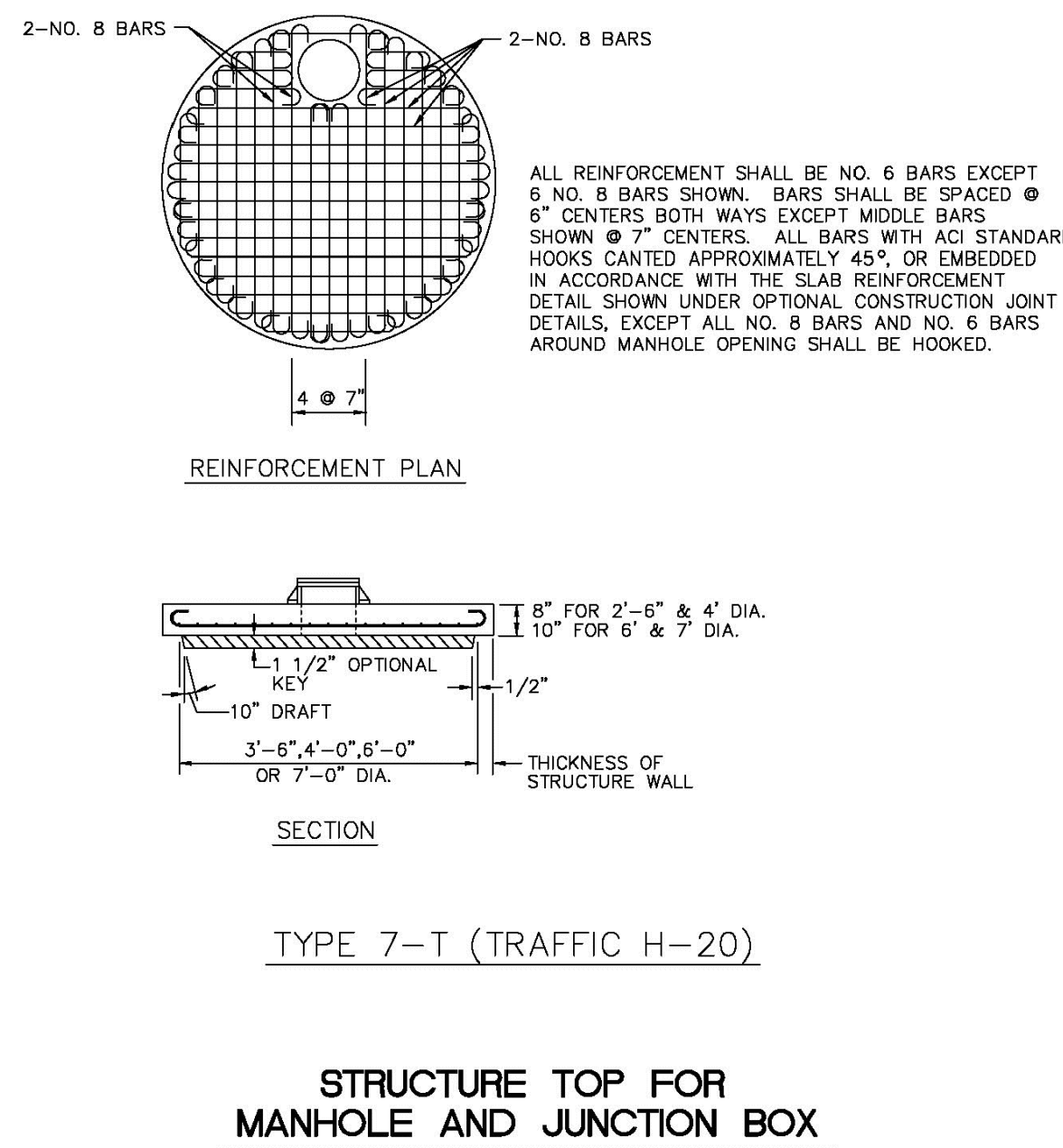
ENGINEERING STANDARDS 2025			
REVISONS		ENGINEERING DIVISION CITY OF POMPAÑO BEACH	TYPE 'E' INLET
BY	DATE		
S.S.	09-11		
SCALE: N.T.S.			DATE: JUNE 2022 DWG. NO. 402-1



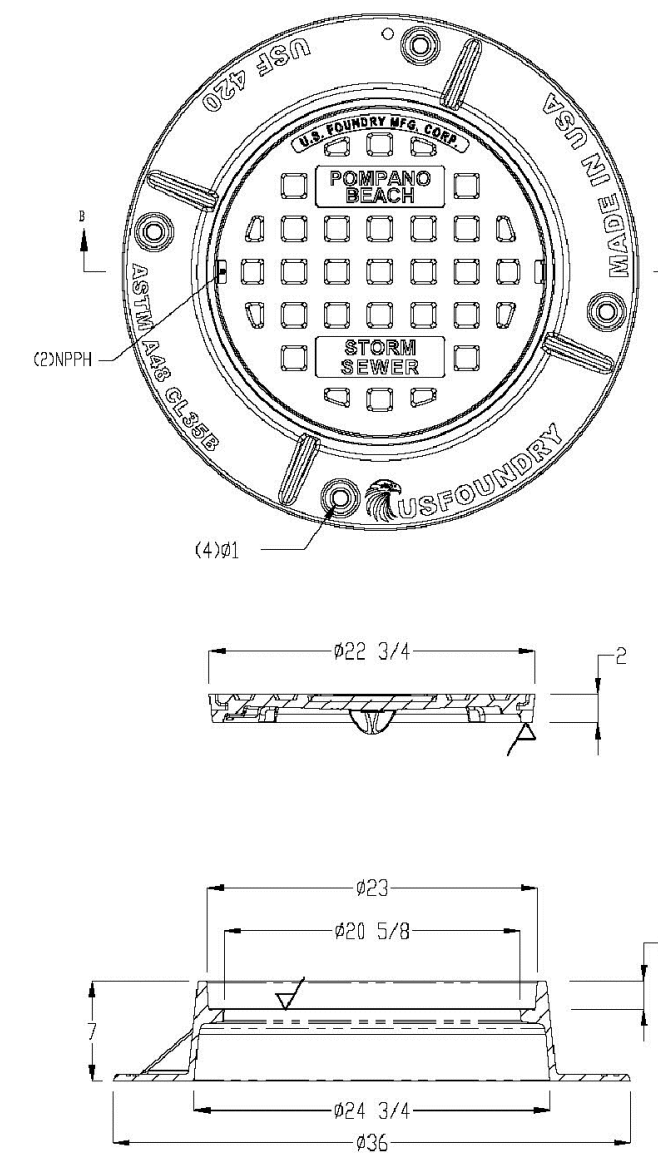
ENGINEERING STANDARDS 2025			
REVISIONS		ENGINEERING DIVISION CITY OF POMPAÑO BEACH	TYPE "H" INLET
BY	DATE		
S.S.	09-11		
		SCALE: N.T.S.	DATE: JUNE 2022 DWG. NO. 403-1



ENGINEERING STANDARDS 2025			
REVISIONS		ENGINEERING DIVISION CITY OF POMPANO BEACH	STRUCTURE TOP (TYPE 7-NT)
BY	DATE		
		SCALE: N.T.S.	DATE: <u>JUNE 2022</u> DWG. NO. 408-1



ENGINEERING STANDARDS 2025			
REVISIONS		ENGINEERING DIVISION CITY OF POMPANO BEACH	STRUCTURE TOP (TYPE 7-T)
BY	DATE		
SCALE: N.T.S.		DATE: JUNE 2022	DWG. NO. 408-2



ENGINEERING STANDARDS 2025			
REVISIONS		ENGINEERING DIVISION CITY OF POMPANO BEACH	COVER FOR MANHOLES AND INLETS
BY	DATE		
A.S.	12/22		
SCALE: N.T.S.			DATE: DEC 2022 DWG. NO. 409-1